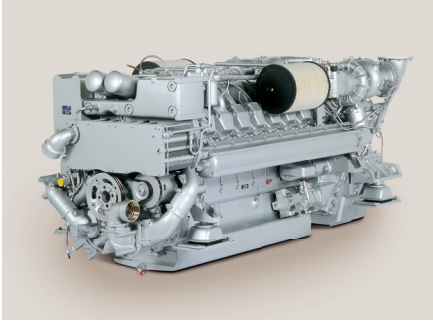


Diesel Engine 12V 2000 M61

for Vessels with Unrestricted Continuous Operation (1A)

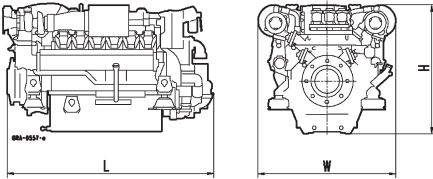


Dimensions and Masses

12V 2000	Dimensions (LxWxH) mm (in)	Mass, dry kg (lbs)
M61	1890x1400x1290 (74.4x55.1x50.8)	2600 (5732)
12V 2000 - with Gearbox type*	Dimensions (LxWxH) mm (in)	Mass, dry kg (lbs)
M61 - ZF 3050	2692x2130x2009 (106.0x83.9x79.1)	3290 (7253)

* gear ratio on request

Specifications are subject to change without notice. All dimensions are approximate, for complete information refer to installation drawing. For further information consult your MTU distributor/dealer.



Typical applications: Work Boats, Ferries, Tugs, Barges and Large Sailing Yachts

Engine Model	12V 2000 M61	
Rated power ICFN	kW (bhp)	600 (805)
Speed	rpm	1800
No. of cylinders		12
Bore/stroke	mm (in)	130/150 (5.1/5.9)
Displacement, total	l (cu in)	23.9 (1458)
Flywheel housing		SAE 0
Gearbox model		ZF 3050
Optimization of exhaust emissions ¹⁾		IMO II/EPA 2/CCNR II
Solas compliance		Yes (without optional accessory kit)

¹⁾ IMO – International Maritime Organisation
 EPA – US Marine Directive 40 CFR 94
 ReihnSchUO – CCNR, Stage II



Performance & Fuel Consumption ¹⁾		12V 2000 M61		
Speed	rpm	1800	1600	1200
Maximum power	kW	600	600	400
	bhp	805	805	537
Power on propeller curve (n ³)	kW	600	420	180
	bhp	805	563	241
Fuel consumption	g/kWh	215	209	214
	l/h	129	87.8	38.5
	gal/h	34.1	23.2	10.2

¹⁾ Tolerance +5% per ISO 3046, Diesel fuel to DIN EN 590 with a min L.H.V. of 42800 kJ/kg (18390 BTU/lb)
All pumps necessary for engine operation included. Heat exchanger version without sea water pump: -2 g/kWh

Standard Equipment	
Starting system	Electric starter 24 V
Auxiliary PTO	Charging generator, 140A, 28V, 2 pole
Oil system	Gear driven lube oil pump, lube-oil duplex filter with diverter valve, lube-oil heat exchanger, handpump for oil extraction
Fuel system	Fuel feed pump, fuel pre-filter, fuel main filter with diverter valve, on-engine fuel oil cooler, leak-off tank level monitored
Cooling system	Coolant-to-raw water plate core heat exchanger, self priming centrifugal raw water pump, gear driven coolant circulation pump
Combustion air system	Turbocharging with 2 water-cooled exhaust-gas turbochargers, on-engine intake air filters
Exhaust system	Triple-walled, liquid-cooled, on-engine exhaust manifolds, twin exhaust outlet, exhaust bellows horizontal discharge
Mounting system	Resilient mounts at free end
Engine management system	Engine and gearbox control and monitoring system (MDEC)

Optional Equipment	
Auxiliary PTO	Charging generator, 200A, 28V, 2 pole, bilgepump, on-engine PTOs
Fuel System	Duplex fuel prefilter, fuel conditioning system
Cooling System	Coolant preheating system, integr. seawater gearbox piping
Exhaust System	Exhaust bellows vertical discharge SOLAS Kit
Mounting System	Resilient mounts at driving end
Engine Management System	In compliance with Classification Society Regulations (EMU + MEU)
Monitoring / Control System	smartline, blueLine, bluevision
Power Transmission	Torsionally resilient coupling
Gearbox Options	Reverse reduction gearbox, el. actuated, gearbox mounts, trolling mode, trailing mode free auxiliary PTO, hydraulic pump drives

> Power definition according ISO 3046
> Intake air depression 15 mbar/Exhaust back pressure 30 mbar

> Intake air temperature 25°C/Sea water temperature 25°C
> Barometric pressure 1000 mbar