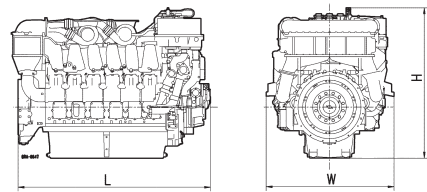
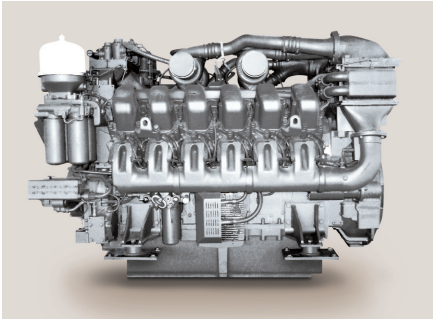


Series 4000

Diesel Engines for mechanical drive



Dimensions and Masses

Engine	Dimensions LxWxH mm (in)	Mass, dry kg (lbs)
12V 4000 S03	2405x1449x1870 (95x57x74)	6155 (13570)
16V 4000 S03	3020x1449x1870 (119x57x74)	7480 (16491)
20V 4000 S03	2865x1660x1870 (113x65x74)	11075 (24416)

All dimensions are approximate; for complete information refer to the installation drawing.

Engine Model

Bore/stroke	mm (in)	170/210 (6.7/8.3)
Cylinder configuration		90°V
Displacement/cylinder	l (cu in)	4.77 (291)
Displacement, total	l (cu in)	12V: 57.2 (3491), 16V: 76.3 (4656), 20V: 95.4 (5822)
Fuel specification		EN 590, Grade No.1-D/2-D

Engine Type	Rated Power ICFN			Peak Torque*		
	kW	bhp	rpm	Nm	lb-ft	rpm
Optimization	③					
Application	Heavy duty operation (4A)					
12V 4000 S23	1425	1911	1800	9003	6640	1485
16V 4000 S23	1865	2500	1800	12004	8854	1485
Optimization	③					
Application	Short-time duty operation (4C)					
20V 4000 S53L	3000	4023	1800	16852	12428	1700

Optimization: ③ Exhaust emission EPA 40 CFR part 89/ Tier 2

* Alternative torque curves available to meet transmission input limits



Power. Passion. Partnership.

Application	Power Definition	
4A	Continuous operation w/100% load	Load factor: $\geq 60\%$, Operating hours: unrestricted, Overload: Fuel stop (ICFN)
4C	Short-time operation w/variable load	Load factor: $< 75\%$, Operating hours: max. 1000p/y, Overload: Fuel stop (ICFN)

Power output within 5% tolerance at standard conditions. Power definition according to ISO 3046 (ratings also correspond to SAE J 1995 and SAE J 1349 standard conditions)
Consult your MTU distributor/dealer for the rating that will apply to your specific application.

Standard Equipment	
Starting System	Hydraulic starter
Fuel System	Common rail injection system, Double-walled high pressure fuel lines
Lube Oil System	Multi-stage lube oil filters, Closed crankcase breather system
Cooling System	HT (JW) and LT (CAC) coolant circuits with separate coolant pumps and thermostats
Flywheel/Housing	SAE 00 wet flywheel housing
Engine Mounting	Trunnion mount (three-point mounting)
Electronics and Instrumentation	DDEC/ADEC engine control and management systems

Optional Equipment	
Lube Oil System	2 or 4 liter centrifugal oil filters
Combustion Air System	Air shut-off flaps
Exhaust Gas System	Exhaust gas bellows with companion flanges
Coolant System	Coolant connecting parts (weld-on flanges and rotatable elbows), Front crank PTO for radiator fan drive
Accessory Drives	28 VDC battery charging alternator, Auxiliary PTO`s for hydraulic pump drives

Reference conditions:

> Intake-air temperature: 25°C (77°F)

> Ambient air pressure: 1000 mbar (14.5 psi)

> Charge air coolant temp.: 45°C (113° F)

> Altitude above sea level: 100 m (328 ft)

Subject to change without notice. Customization possible. Engines illustrated in this document may feature unavailable options.